

Arche Solar Project

Case No. 20-0979-EL-BGN



Exhibit R

Drain Tile Maintenance Plan

Drain Tile Maintenance Plan

Arche Solar

Gorham Township,
Fulton County, Ohio

Prepared by:



Arche Energy Project, LLC
a wholly-owned subsidiary of 7X Energy, Inc.
3809 Juniper Trace, Suite 100
Austin, TX 78738
Contact: Cliff Scher, Director of Project Development
P: (866) 298-1632

With assistance from:



Environmental Design & Research,
Landscape Architecture, Engineering & Environmental Services, D.P.C.
217 Montgomery Street, Suite 1000
Syracuse, New York 13202
P: 315.471.0688
F: 315.471.1061
www.edrdpc.com

July 2020

Introduction

Arche Energy Project, LLC (Arche) has prepared this Drain Tile Maintenance Plan for the approximately 650-acre Arche Solar (the Facility) in Fulton County, Ohio. This plan was prepared to describe how Arche plans to maintain the integrity of the drainage system of the Facility as it relates to the Facility property and the adjacent properties.

Drain Tile Survey

Arche has completed multiple steps to survey and identify the location and extent of the existing drainage tile system within the Facility boundary. Arche interviewed participating landowners and received maps and photos from landowner records. Arche also consulted with the Fulton County Engineer to gain information on main drainage lines and County maintained drainage lines. A survey was conducted using a combination of aerial imagery extraction using thermal analysis to locate drainage tile (following a precipitation event) and supplementation with ground penetrating radar (GPR). A map of identified drain tiles is included as an attachment to this plan.

Avoidance and Mitigation

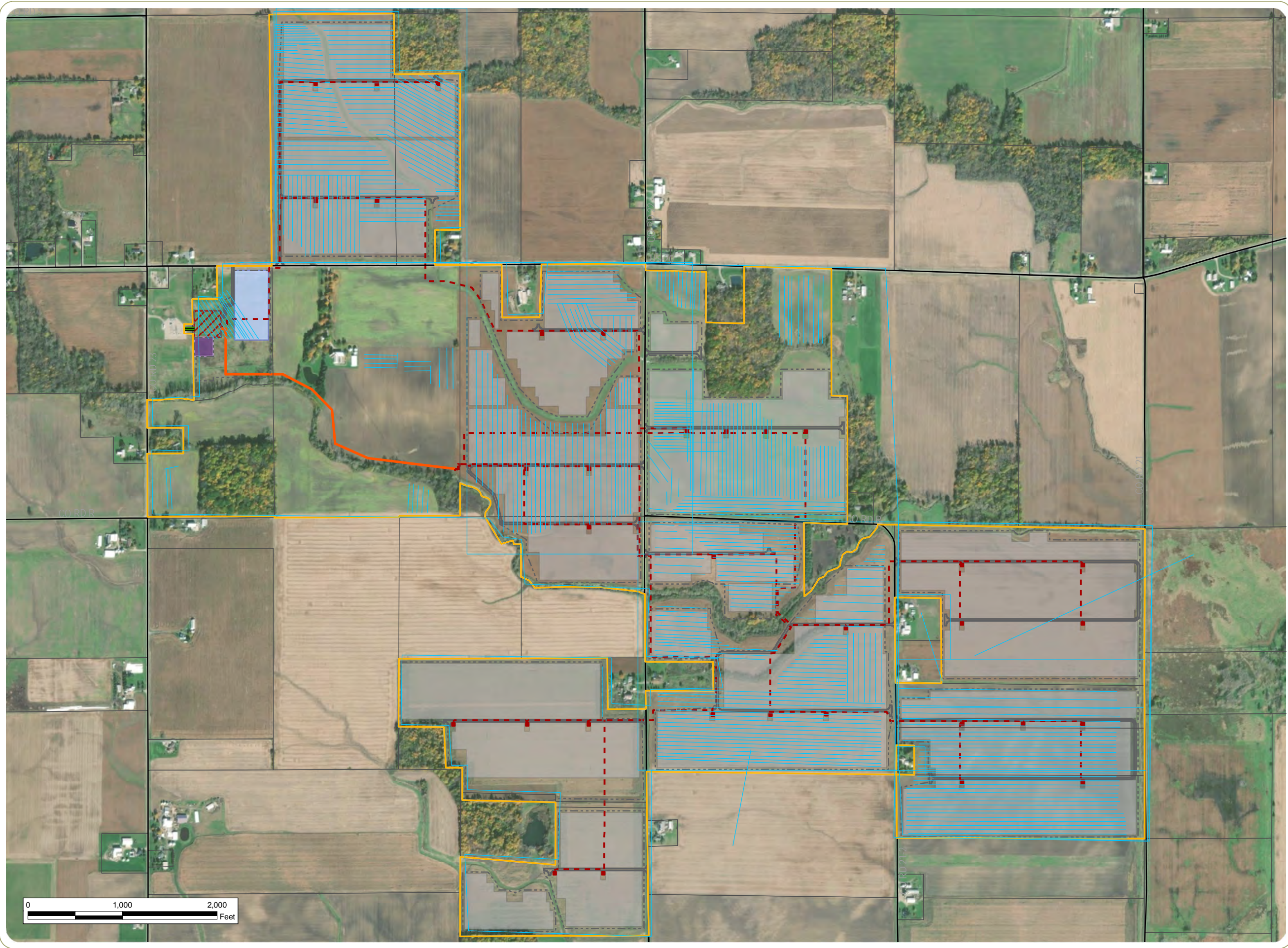
Based on the survey results, Arche will make commercially reasonable efforts to avoid impacting the drainage tile system throughout development, construction, and operations. Avoidance efforts will include the completion of a hydrology study prior to final engineering, that considers a 100-year flood event. The results of that hydrology study and the drainage tile survey will inform final design and engineering. Drainage tile locations will be noted and avoided where possible during engineering. The hydrology assessment will identify hydrological conditions that can be mitigated during Facility construction and operations. Mitigation measures, including grading, drainage routing, etc. will be detailed in the grading plan, which will be prepared as part of final engineering plans for the Facility. This plan is intended to supplement and/or provide a functional equivalent to the existing drainage tile system. The detailed grading and drainage plan will include mitigation for neighboring properties to prevent negative impacts during construction and operation of the Facility.

Drain Tile Repair

Arche does expect to impact some portion of the existing drainage tile system during construction of the project. Arche will evaluate the damage and repair or replace with functionally equivalent systems dependent upon the extent and impact of damage. If the affected landowner agrees to not have a field tile system repaired, Arche may do so only if the field tile systems of adjacent landowners are unaffected by the non-repair of the landowner's field tile system. Also, if Arche becomes aware during operation of circumstances indicating that the Facility has damaged functioning drain tile that are adversely affecting adjacent landowners or public drains (through unexpected water flows or ponding), then Arche will promptly investigate the matter and use commercially reasonable efforts to promptly address and mitigate any such negative impacts to adjacent landowners or public drains. These mitigation efforts may include drainage routing, or correction of stormwater flows through retention facilities or other means.

Complaint Resolution

Arche has provided a Complaint Resolution Plan. Complaints related to drainage tile will be provided with responses quickly, as outlined in the Complaint Resolution Plan.



Arche Solar

Gorham Township, Fulton County, Ohio

Drainage Tile Survey Results

- Drainage Tile
- Public Road
- Parcel Boundary
- Project Components**
- Inverter
- Gen-tie Line
- Fenceline
- Underground Collection Line
- Overhead Collection Line
- Access Road
- PV Panel Area
- Laydown Yard
- O&M Building
- Collection Substation
- Project Area



Notes: 1. Basemap: Esri ArcGIS Online "World Imagery" map service. 2. This map was generated in ArcMap on July 16, 2020. 3. This is a color graphic. Reproduction in grayscale may misrepresent the data. 4. Facility components and drainage tile locations provided by 7X Energy; parcel data obtained from Fulton County. 5. Map Scale: 1:12,000.

www.edrdpc.com